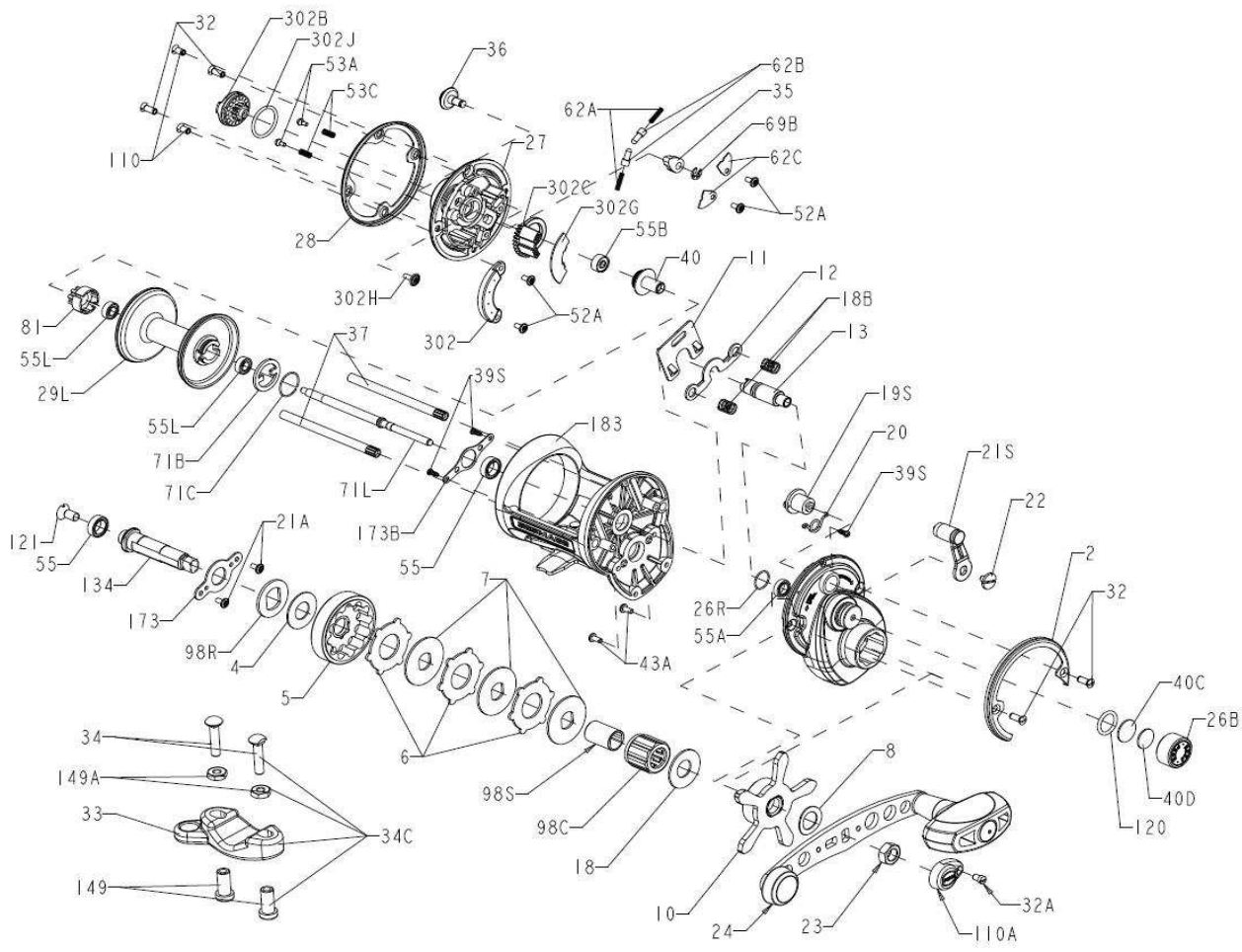




# Parts List for Models 515MAG2 and 525MAG2



Key #	SAP Number	Part Number	Description	Qty
1		1-525MAG2	RIGHT SIDE PLATE	1
2		2-525MAG2	RING, RIGHT SIDE PLATE	1
4		4-60	FIBER WASHER	1
5		5-525MAG2	MAIN GEAR	1
6		6-525MAG	FRICITION DRAG WASHER	3
7		86-49L	METAL DRAG WASHER	3
8		8-60	WASHER, TENSION	1
10		10-525MAG2	STAR DRAG ASSEMBLY	1
11		11-525MAG2	ECCENIRIC JACK	1
12		12-525MAG2	PINION YOKE	1
13		13-525MAG2	PINION	1
18		18-505	TENSION SPRING WASHER	2
18B		18-525	SPRING	1
19S		19S-525	ECCENTRIC	1
20		20-525	SPRING	1
21A		21A-420G	SCREW	6
21S		21S-525	SWITCH, ECCENTRIC	1
22		22-310	ECCENTRIC SCREW	1
23		23-555	NUT	1
24		24A-525MAG2	HANDLE ASSEMBLY	1
26B		26B-525MAG2	CAP, SPOOL TENSION CONTROL	1
26R		26R-525MAG2	RING, RETAINING	1
27		27-525MAG2	PLATE, LEFT SIDE	1
28		28-525MAG2	RING, LEFT SIDE	1
29L		29L-525MAG2	SPOOL (525MAG2)	1
29L		29L-515MAG2	SPOOL (515MAG2)	1
32		32-310	SCREW	4
32A		32-15	SCREW	1
34C		33C-525MAG2	KIT, ROD CLAMP	1
33		33-113	ROD CLAMP	1
34		34-45	SCREW	2
149		149-45	NUT, ROD CLAMP	2
149A		149-200	NUT, HEX	2
35		35-525MAG2	TONGUE, CLICK	1
36		36-525MAG2	BUTTON, CLICK	1
37		37-525MAG2	POST, FRAME (525MAG2)	2
37		37-515MAG2	POST, FRAME(515MAG2)	2
39S		39-525	SCREW	3
40		40-525MAG2	BUSHING, LEFT SIDE SPINDLE	1
40C		40C-555	WASHER, METAL THRUST	1
40D		40D-555	WASHER, RUBBER THRUST	1
46A		46A-4300	SCREW	2
53A		53A-5600	PIN, CLICK	2
53B		53B-5600	SPRING	2
55		55-525MAG2	BEARING, BALL	2
55A		55A-525MAG2	BEARING, BALL	1
55B		55-113H	BEARING, BALL	1
55L		55L-965	BEARING, BALL	2
62A		62A-525MAG2	SPRING	2
62B		62B-525MAG	PIN, CLICK	2
63A		63A-525MAG2	COVER, CLICK SPRING	2
69B		69B-600	RING, RETAINING	1
71B		71B-525MAG2	PLATE, CLUTCH	1
71C		71C-525MAG	RETAINER, CLUTCH PLATE	1
71L		71L-525MAG2	SPINDLE	1
71L		71L-515MAG2	SPINDLE (515MAG2)	1
81		81-525MAG	RATCHET, CLICK	1
86		86-49L	WASHER, KEY	3
98		98-525MAG2	SPACER	1
98B		98B-760	CLUTCH BEARING	1
98S		98S-525MAG2	CLUTCH BEARING SHAFT	1
110		110-50	SCREW	2
110A		110A-525MAG2	COVER, HANDLE NUT LOCK	1
120		120-113H	O-RING	1
121		121-525	SCREW	1
134		134-525MAG2	STUD, GEAR	1
173		173-525MAG2	RETAINER, BEARING	1
173B		173B-525MAG2	RETAINER, BEARING	1
183		183-525MAG2	FRAME, COMPLETE (525MAG2)	1
183		183-5125MAG2	FRAME, COMPLETE (515MAG2)	1
302		302-525MAG2	ASSEMBLY, MAGNET HOUSING	1
302B		302B-525MAG2	DIAL, BRAKE ADJUSTMENT	1
302C		302C-525MAG2	CARRIER, MAGNET SHIELD	1
302G		302G-525MAG2	SHIELD, ADJUSTABLE MAGNET	1
302H		302H-525MAG2	SCREW	1
302J		302J-525MAG2	O-RING	1