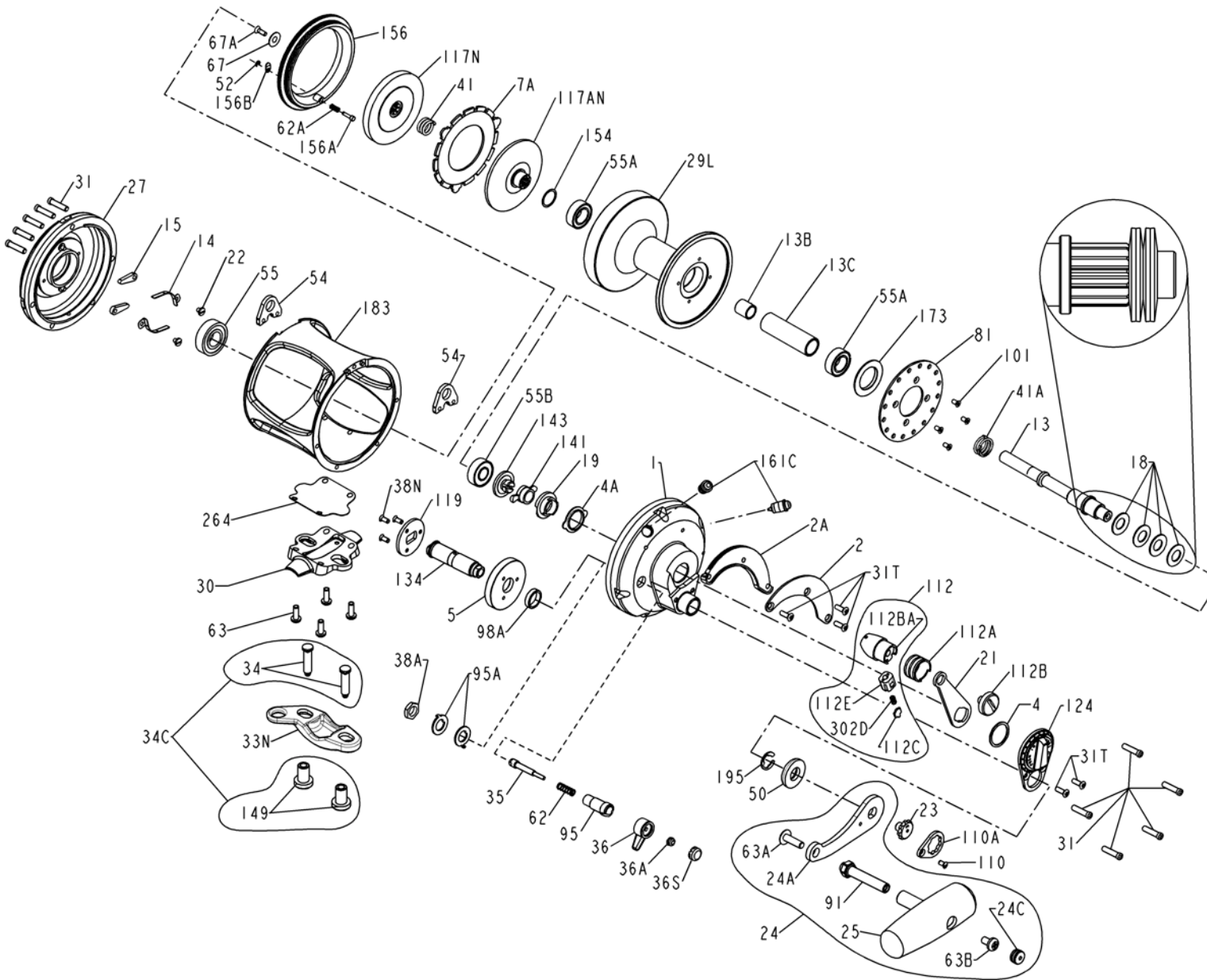




PARTS LIST FOR MODEL 30VW



KEY NO.	DESCRIPTION	PART NO.
19	Drag Cam	019 030VS
21	Drag Lever	021 030VS
22	Dog Spring Screw (2 req)	022 109
23	Handle Screw Assembly	023 114
24	Handle Assembly	024 030TW
24A	Handle Blank	024 030TW-1
24C	Handle Knob Cap	024C050M
25	Knob Assembly	025 050M
27	Left Side Plate Assembly	027 030VW
29L	Spool	029L030VSW
30	Stand	030 030VS
31	Side Plate Screw (10 req)	031 080VS
31T	Short Screw (5 req)	031T070
33N	Rod Clamp	033N070
34	Clamp Screw (2 req)	034 070VS
34C	Rod Clamp Screw & Nut Kit	034C070VS
35	Click Tongue	035 070
36	Click Button	036N050
36A	Click Button Nut	036 700
36S	Click Button Cap	036S080ST
38A	Click Bushing Nut	038 710
38N	Screw (3 req)	038N007
41	Spring	041 2.5FR
41A	Drag Spring	041 070
50	Shield	050 030VW
52	Retaining Ring	052 910
54	Harness Lug (2 req)	054 030T
55	Left Side Ball Bearing	055 080
55A	Spool Ball Bearing (2 req)	055 080ST
55B	Right Side Ball Bearing	020 704
62	Click Spring	062 050
62A	Click Spring	062 545
63	Stand Screw (4 req)	063 030T
63A	Screw	063A050
63B	Screw	063 050
67	Pinion Gear Washer	067 070
67A	Plate Screw	067A070
81	Ratchet	081 050
91	Handle Rivet	091N050
95	Click Tongue Bushing	095 070
95A	Click Bushing Washer (2 req)	095A050
98A	Gear Stud Spacer	098A030VW
101	Ratchet Screw (4 req)	101 030
110	Screw	110 050
110A	Locking Plate	110A050
112	Drag Lever Knob Assembly	112 030VS
112A	Drag Knob Sleeve	112A030VS
112B	Drag Knob Screw	112B070
112BA	Drag Lever Knob	112B030VS
112C	Drag Click Plate	112C030VS
112E	Click Plate Housing	112E030VS
117N	Inner Drag Plate	117AN050S
117N	Outer Drag Plate	117N050S
119	Coupling Plate	119 050
124	Bridge Cover Assembly	124L030VS
134	Gear Stud	134 030VW
141	Cam Follower	141 030VS
143	Preset Screw	143 016VS
149	Rod Clamp Nut (2 req)	149 070
154	Inner Drag Plate Shim	154 080
156	Drag Cover	156 030VS
156A	Lock Pin	156A030VS
156B	Lock Plate	156B030VS
161C	Locating Pin Assembly (2 req)	161C030VS
173B	Bearing Retainer	173 050VS
183	Tube Frame	183N030VW
195	Retaining Ring	195 040
264	Stand Gasket	264 030VS
302D	Drag Click Plate Housing	302D525MAG

KEY NO.	DESCRIPTION	PART NO.
1	Right Side Plate Assembly	001 030VS
2	Quadrant Ring	002 030VS
2A	Quadrant Spacer	002A030VS
4	Thrust Washer	004 012LT
4A	Cam Bushing	004 030VS
5	Main Gear	005 030VW
7A	Metal Drag Washer	007A030VS

KEY NO.	DESCRIPTION	PART NO.
13	Pinion Gear	013 030VW
13B	Pinion Gear Sleeve	013B070
13C	Spool Sleeve	013B030VSW
14	Dog Spring (2 req)	014 050
15	Dog (2 req)	015 050
18	Disc Clutch Spring (4 req)	018 030